

23 September 2020

(Id)entity Management: What is the shape of the future?

John Chapman

Senior Product Manager, Metadata Strategy and Operations

Warning: Spoiler Alert

- Some problems have been addressed
- Thorny problems remain
- Many tools and workflows will be required
- Many things will only reveal themselves along the way

Starting with the goal in mind

- Can we design our systems to be less brittle?
- Can we "swap out" components instead of replacing the whole thing?
- What are the correct "components" of distributed systems?
- What's going to be centralized, and what will be done locally?

Thorny Problems affecting answers

- Archives and Special Collections
- "Entity Alignment", mixing & matching
- Representing and facilitating local communities & collections

Archives and Special Collections

- Descriptive data models for special collections in linked data environments
- Challenges around multilinguality
- Ethical issues, community engagement
- Expressing relationships and change over time
- The long tail of authorities & identifiers in special collections
- Sustainability

OCLC RESEARCH POSITION PAPER

Archives and Special Collections Linked Data: Navigating between Notes and Nodes

**OCLC Research Archives and Special Collections
Linked Data Review Group**

Entity Alignment

- Given an explosion of “mixing and matching,” how can we align?
- Can we bridge cultural and temporal semantic differences?
- What tools will be most efficient/useful/durable over time?



Entity
Management
Infrastructure
(2020-21)

Local knowledge, local communities

- Indigenous peoples
- Local history
- Local semantics
- Naming
- Collecting
- Who does the work?

- Aggregating without homogenizing

[Works in Progress Webinar: Decolonizing Descriptions: Finding, Naming and Changing the Relationship between Indigenous People, Libraries and Archives](#)

This webinar examines how two different organizations—the Association for Manitoba Archives and the University of Alberta Libraries—began the processes of examining subject headings and | classification schemes as they relate to Indigenous people.

[Works in Progress Webinar: Dynamics of change—continuing the conversation on library naming, finding, and relationship-building with Indigenous peoples](#)

Learn about how the University of Toronto Libraries is reckoning with both cultural change and the development of culturally appropriate metadata on a system-wide scale.

[Works in Progress Webinar: Operationalizing the CARE Principles for Indigenous Data Governance](#)

What are the CARE Principles? Learn how they work to address the historical legacy of data inequities that impact Indigenous Peoples. Presenters will also discuss how the CARE Principles promote a broader understanding of the FAIR Principles when applied to Indigenous data and collections.

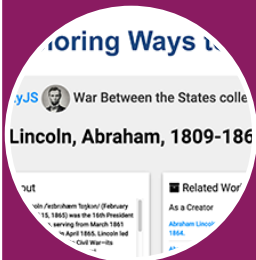
What's OCLC's vision?

- New infrastructure
- A variety of tools and data sources, enabling new workflows
- Ongoing standards, rules, and best-practice conversations
- Targeted research

Why OCLC?



Publish linked data - FAST, VIAF, WorldCat (2009 -)



EntityJS Research Project (2013)



Person Entity Lookup Pilot (2014)



CONTENTdm Metadata Refinery (2015-16)



Project Passage (2017-18)



CONTENTdm Linked Data Pilot (2019-20)



Entity Management Infrastructure (2020-21)



Why OCLC?



CONTENTdm
Linked Data
Pilot
(2019-20)



Entity
Management
Infrastructure
(2020-21)

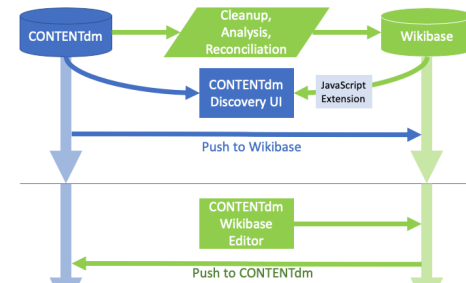
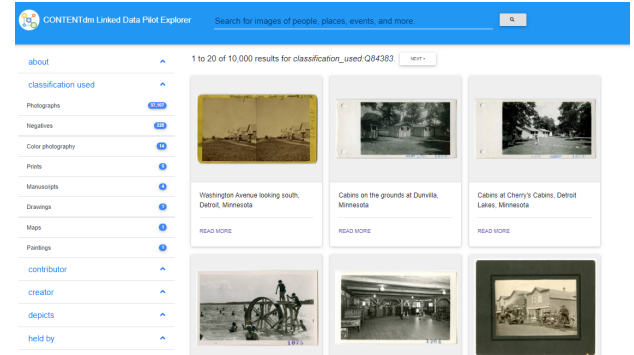
CONTENTdm Linked Data Pilot

CONTENTdm
Linked Data Pilot

CONTENTdm
Linked Data
Pilot (2019-20)

Project goals

- Develop scalable methods and approaches for richer, state-of-the-art machine representations of entities and relationships.
- Make visible connections that were formerly invisible.
- Prototype an application for library staff to:
 - convert existing record-based metadata into linked data
 - manage and publish the resulting entities and relationships



Phase 1:

- Try to map CONTENTdm data to entities
- Engage CONTENTdm users to help
- Encourage best practices for CONTENTdm metadata curation

Phase 2:

- Provide UI to create and maintain CONTENTdm data in Wikibase
- Handle unreconciled data

Entity Management Infrastructure

- Two-year, \$2.436M Mellon Foundation grant, matched by OCLC
- Production infrastructure for Creative Work and Person entities
- Support for multiple descriptive and encoding standards
- Use of persistent identifiers
- **Most importantly: a collaboration with the library community**



Entity
Management
Infrastructure
(2020-21)

Our goals

- Address infrastructure needs identified by libraries
 - Expand on non-MARC metadata management
 - Link library data to non-library data... and shared data to local data
 - Provide ID creation services to help “at the point of need”
 - Stand behind entity URIs
- Operate at a large scale – and be sustainable
- Complement other efforts
- Deliver products and services December 2021

A semantic continuum



Shared Entity
Management
Infrastructure
(2020-21)



CONTENTdm
Linked Data
Pilot (2019-20)

Shared entities...

**...localized, heterogeneous, de-centralized
collections**

**Machine-matching, highly
automated reconciliation...**

**... tools for hand-matching, semi-automated
reconciliation**

**Widely applicable context:
Persons & creative works**

**Granular context:
About, Depicts, Annotations, Notes**

Combines bib and auth work

Combines object and context description

Custom applications and interfaces needed

This is the new Knowledge Work

Thank you!

John Chapman

Senior Product Manager,
Metadata Strategy & Operations

chapmanj@oclc.org

<https://blog.oclc.org/next/author/john-chapman/>

**Because
what is
known must
be shared.®**

