

Community-Building and Extending BIBFRAME for Special Collections



Jason Kovari (Cornell University)

Marie-Chantal L'Ecuyer-Coelho (Bibliothèque et Archives nationales du Québec)

Paloma Graciani Picardo (Harry Ransom Center, University of Texas at Austin)

Audrey Pearson (Beinecke Library, Yale University)

Elizabeth Russey Roke (Emory University)

Brittney Washington (Harry Ransom Center, University of Texas at Austin)

3rd Annual BIBFRAME Workshop in Europe (Stockholm, Sweden)

2019-09-17

Goal



- Sharing two efforts around extending BF for Special Collections
- Hear what European colleagues are doing for these materials
- Build relationships for ongoing engagement



Art & Rare Materials

BIBFRAME Ontology Extension (ARM)

ARM's Beginnings

Supported by LD4P 2016-2018

Two projects: [ArtFrame](#) & [RareMat](#)

Partnership between ARLIS/NA, RBMS and multiple institutions



ARM Modeling Areas

Accession Numbers

Attributions

Awards

Bibliographic Citations

Bindings

Carriers and Bound-withs

Custodial History

Exhibitions

Fonts, Handwriting & Notations

Limitation Statements

Markings

Materials

Measurements

Notes in Art

Pagination and Foliation

Physical Condition

Signature Statements

Style and Period

Titles in Art

Modularized Ontologies

Core (ARM)

<https://github.com/LD4P/arm/tree/master/core/ontology/0.1>

Awards

<https://github.com/LD4P/arm/tree/master/award/ontology/0.1>

Custodial History

https://github.com/LD4P/arm/tree/master/custodial_history/ontology/0.1

Measurements

<https://github.com/LD4P/arm/tree/master/measurement/ontology/0.1>

Activity

<https://github.com/LD4P/arm/tree/master/activity/ontology/0.1>

Activity ontology will be deprecation in favor of BF Contribution model

Documentation

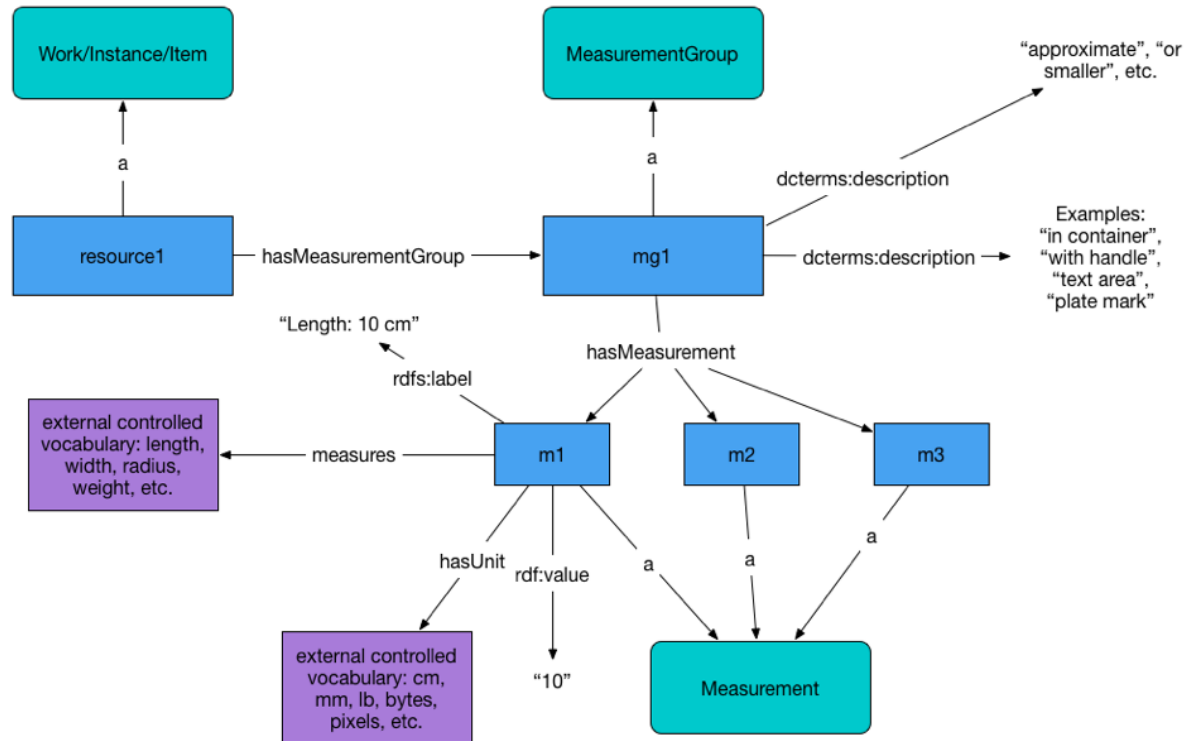
Detailed **documentation of each model**, with model overviews, diagrams, RDF samples, term specification, etc.

A set of **ontologies & controlled vocabularies**

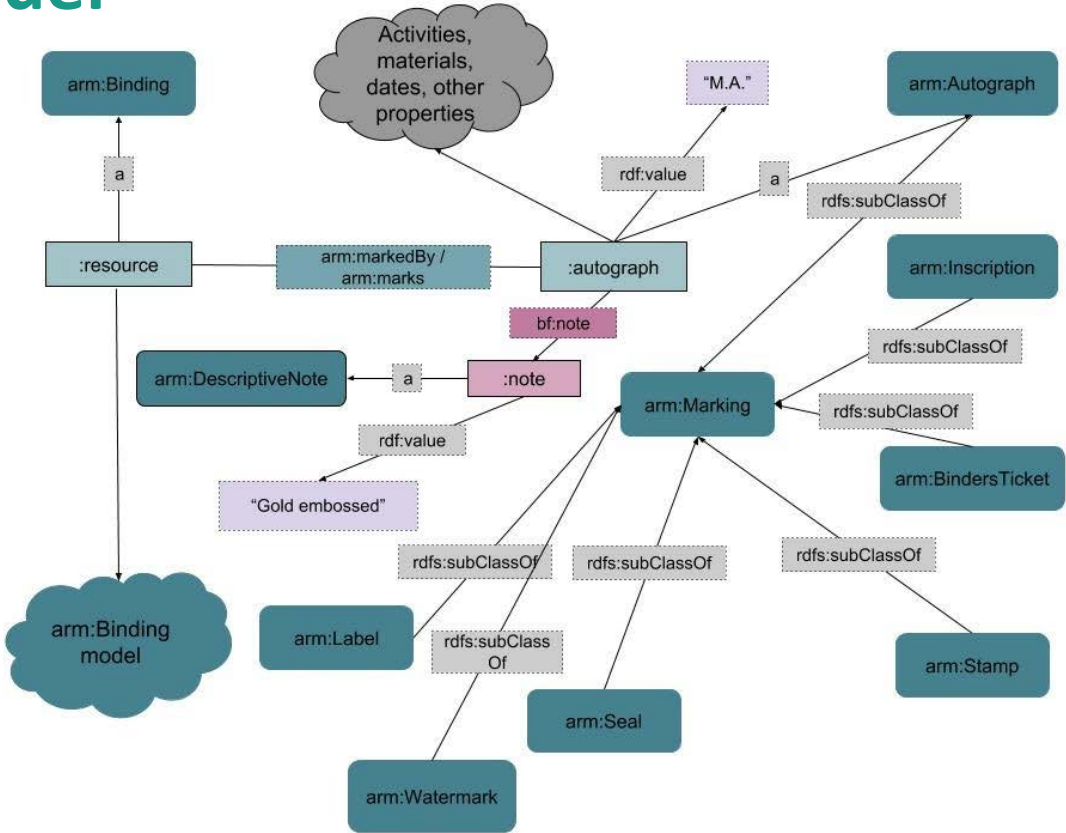
Application profiles (formalized in SHACL)

Recommendations for future work

Measurement Model



Markings Model



ARM's Present

Joint Task Force of:

January 2019 - January 2021

- Association of College and Research Libraries' Rare Books and Manuscripts Section: Bibliographic Standards Committee
- Art Libraries Society of North America: Cataloging Advisory Committee
- Society of American Archivists: Standards Committee



Task Force's Activities & Future Efforts

On-the-ground

- Review, deprecate and expand existing ARM modeling
- Incorporate Archives use cases
- Seek approval of outputs by sponsor organizations
- Identify hosting solution
- Secure ongoing commitment to support ARM's development

Task Force's Activities & Future Efforts

Aspirational

- Work with the Library of Congress to further define the relationship between the core ontology (BIBFRAME) and the ARM extension
- Work with the Program for Cooperative Cataloging (PCC) to incorporate ARM into application profiles



LD4P Rare Materials Affinity Group

(RM-AG)

RM-AG's Charge & Membership

Seeks to make use of the collective expertise across the member and cohort institutions to discuss needs and challenges particular to rare materials, and to coordinate the development of resources to support our work.

Cross-over membership between ARM and RM-AG

Variety of Objects Being Cataloged

Rare books, auction catalogs, web archives, graphic materials, artworks, realia and kits, video games, comic books and ephemera

11 institutions engaging in this group

Use Cases

Story: As a researcher, I have found a copy of a sammelband (bound-with) in the catalog. I want to be able to quickly identify everything that has been with this object...

User Type: Book History Scholar

Functional Need: Determine the material evidence of former uses of the book

Objective: provenance, related items, discovery

Relevant Entities: Item

Developing Profiles Using ARM Ontology

Questions regarding ARM application can be discussed and worked through at the affinity group meetings

Are uploaded into GitHub and can be accessed by other LD4P institutions and beyond

The group uses a google doc detailing institution's profiles: the scope, further development plans, and relevant notes (under development)

Feedback

Element	Works as expected?	Comments/Bugs	Enhancement/Development requests
Title Information	No	Maybe I'm misunderstanding the relationship between Work and Instance, but I wouldn't think that BIBFRAME Instance would automatically inherit the Work title, as the title on the Instance might be different. There is nowhere here to transcribe the title as it appears, which is critical core information for rare materials cataloging. The preferred title (work) and title proper (instance) are not the same thing	
Statement of responsibility	Yes		
Edition statement	Yes		
Contributors	No	LCNAF lookup not working (known issue)	
Publication, Distribution, Manufacture,	No	Transcribed provider statement works. Publisher place lookup not working, can't enter a literal. Publisher name lookup not working, but able to add literals	
Copyright Date	Yes	Needed to click twice to get it to open	
Extent	Yes	Had to click twice on Dimensions after entering Extent to get it to open	
Series Statement	Yes	Have to click twice on main element and subelements to get them to open	
Form of Instance	No	LCGFT lookup not working (known issue)	
Identifier for the manifestation	No	Some identifier RTs are calling to RTs not present on dev -- lc:RT:bf2:Identifiers:Source (Local System no.) and lc:RT:bf2:Identifiers:Note (affects ISBN, Other, Local System no.). Lookup to	update lc:RT:bf2:Identifiers:Note to ld4p:RT:bf2:Identifier, ISBN, Other Identifier and Local System No. RTs

Thank you

Questions?

Comments?

Opportunities?